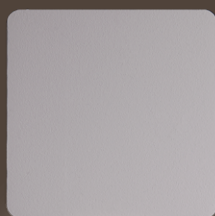
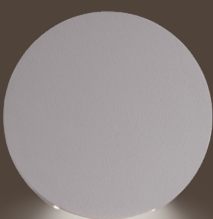


# COMPASS DECO

RECESSED WALL



Designed for indoor wayfinding, Compass Deco fixtures integrate cleanly into architectural surfaces, providing clear, legible guidance across circulation spaces. Suitable for corridors, stairways, walkways, and transitional areas, Deco features a decorative faceplate and is available in round and square forms. Supporting both new construction and remodel applications, Deco can distribute direct or indirect light, delivering low-level illumination with high visual comfort.



Compass  
Brochure



FOR INDOOR  
APPLICATIONS

# COMPASS DECO

RECESSED WALL



Project: \_\_\_\_\_

Type: \_\_\_\_\_

## Order Guide

### 1 - Light & Housing

LUMINAIRE ID	FACEPLATE SHAPE <sup>1</sup>	FACEPLATE FINISH <sup>2</sup>	LIGHT SOURCE <sup>3,4</sup>	WATTAGE		
<b>CDEC</b>			<b>SW</b>			
<b>CDEC</b> - Compass Deco  <sup>1</sup> See page 3 for more details.	<b>RO</b> - Round <b>SQ</b> - Square  <sup>1</sup> See page 3 for more details.	<b>FTMW</b> - Matte white <b>FTMB</b> - Matte black <b>WA</b> - White antimicrobial Silverwerx <b>CF#</b> - Custom finish, specify RAL#  <sup>2</sup> See page 5 for more finish options.	<b>SW</b> - Static white  <sup>3</sup> 90+ CRI. <sup>4</sup> For solid colors consult factory.			
				<b>2W</b>	Round up to 62 lm	Square up to 82 lm
				<b>3W</b>	up to 69 lm	up to 92 lm

COLOR TEMPERATURE	VOLTAGE	MOUNTING	DRIVER	DIMMING
<b>18K</b> - 1800K <b>22K</b> - 2200K <b>27K</b> - 2700K <b>30K</b> - 3000K <b>35K</b> - 3500K <b>40K</b> - 4000K <b>50K</b> - 5000K	<b>120V</b> - 120V <b>277V</b> - 277V <b>UNV</b> - 120V-277V	<b>NCBB</b> - New construction back box <b>NCH</b> - New construction housing with bar hangers <b>RM</b> - Remodel	<b>INTEGRAL</b> - Integral driver	<b>ND</b> - No dimming
			<b>REMOTE</b> - Remote driver	DO NOT SPECIFY FOR REMOTE. SEE "REMOTE DRIVER BOX" SECTION BELOW

### 2. Remote Driver Box

Ordered separately. Specify each required remote driver box on a separate line.

REMOTE DRIVER <sup>5</sup>	LUMINAIRE QUANTITY <sup>6</sup>	LUMINAIRE ID	DIMMING
		<b>CDEC</b>	
<b>RDB#</b> - Remote driver box  <sup>5</sup> Specify each required remote driver box on a separate line.	<b>#X</b> - Number of luminaires  <sup>6</sup> Specify number (#) of luminaires per remote driver. See page 4 for maximum fixture per driver.	<b>CDEC</b> - Compass Deco	<b>RD1</b> - 1% 0-10V <b>RDA</b> <sup>7</sup> - DALI  <sup>7</sup> On-site commissioning is required.

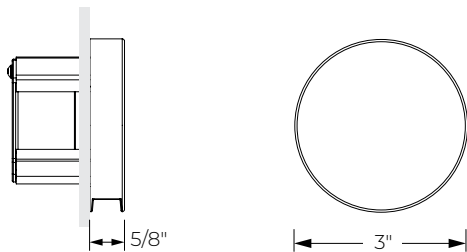
# COMPASS DECO

RECESSED WALL

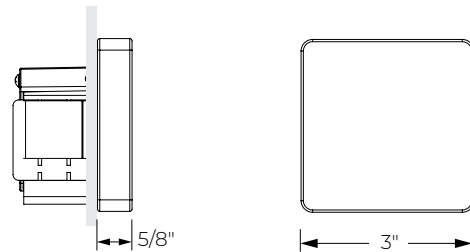


## Dimensions

LIGHT



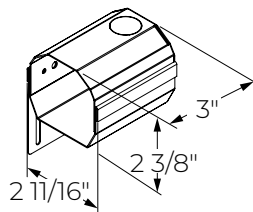
ROUND



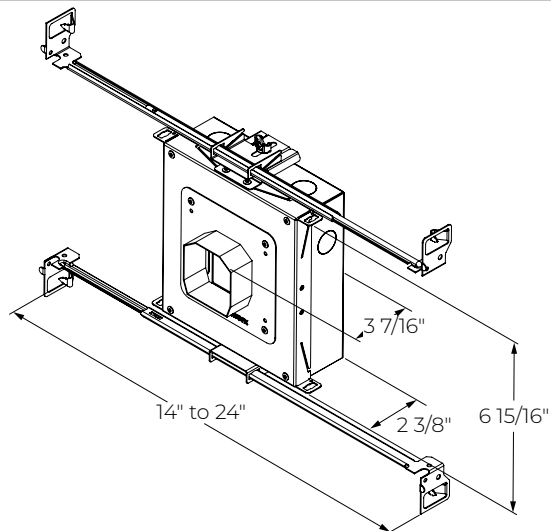
SQUARE

HOUSING

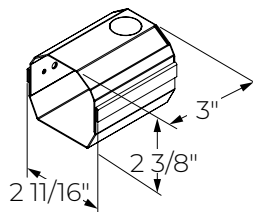
**NCBB** - New construction back box



**NCH** - New construction housing with bar hangers



**RM** - Remodel



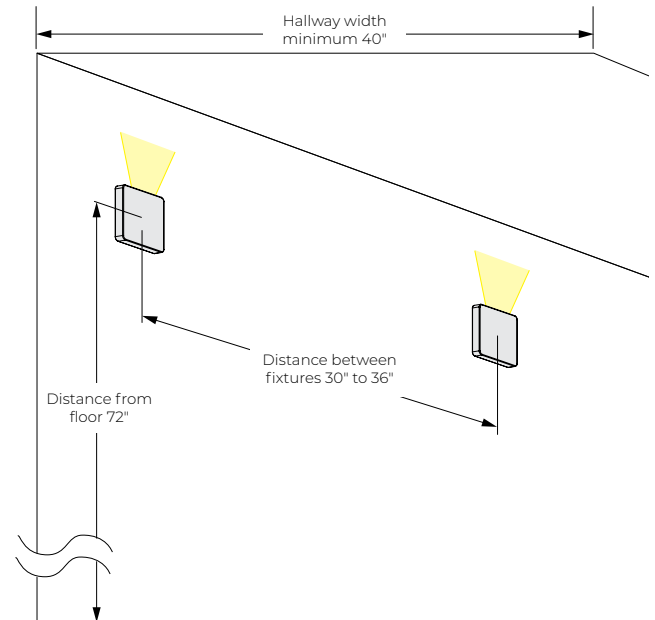
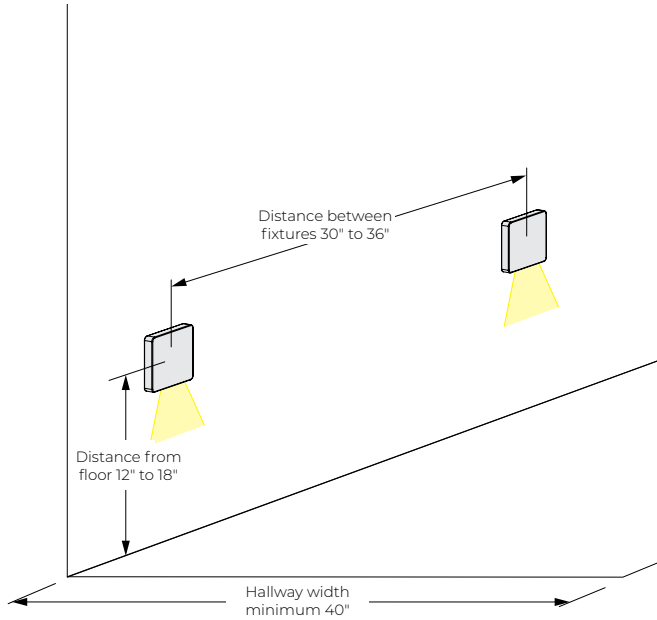
# COMPASS DECO

RECESSED WALL



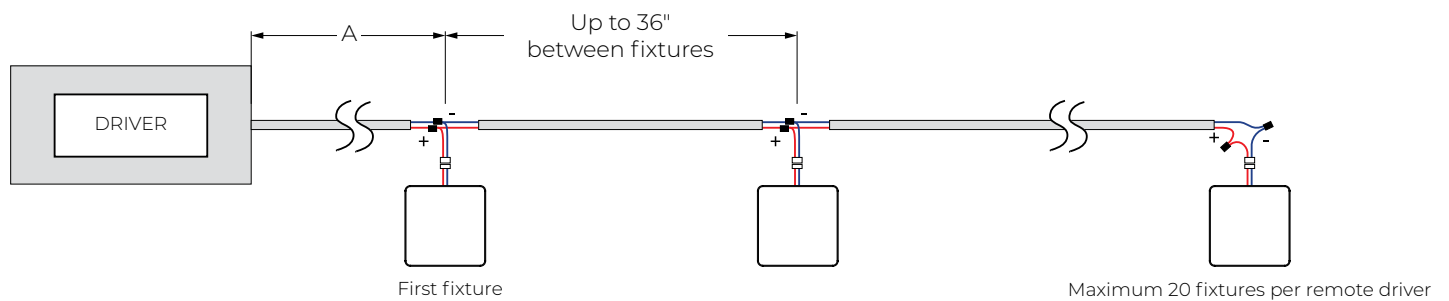
## Spacing Recommendations

Recommended spacing dimensions for best uniform light distribution across the floor and to minimize shadows between fixtures.



Dimensions not to scale, for visualization purposes only.

## Remote Driver



Remote driver box distance to first fixture *				
Wire AWG	12	14	16	18
A	150'	150'	125'	75'

\* The distance from the remote driver box to the first fixture depends on the spacing between fixtures. These values are based on a distance of up to 36" between fixtures.

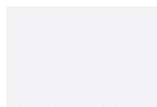
# COMPASS DECO

RECESSED WALL



## Finishes

### Standard



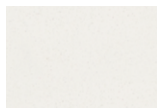
**FTMW** - Matte White



**FTMB** - Matte Black

### Custom

#### Neutrals



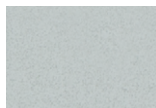
**CRM** - Cream



**GRY** - Gray



**STG** - Steel Gray

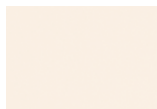


**SAG** - Sage Gray



**BLB** - Black Blue

#### Designer



**ALM** - Almond



**RST** - Rust Fine  
Texture



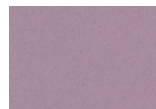
**GRB** - Green Beige



**YLW** - Yellow



**SLM** - Salmon Pink



**VIO** - Pastel Violet



**RED** - Red



**PRR** - Purple Red



**SMB** - Storm Blue



**DPB** - Deep Blue



**OCB** - Ocean Blue



**BLG** - Blue Green



**GNS** - Green Smoke

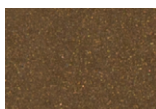


**MNG** - Mint Green

#### Metallics



**CHP** - Champagne



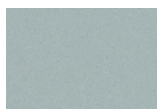
**DBZ** - Dark Bronze



**CNY** - Canyon

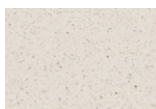
### Premium Custom

#### Neutrals



**MOG** - Moss Gray

#### Designer



**QRZ** - Quartzite  
Texture

#### Metallics



**LMG** - Lime Green



**GLD** - Gold



**IRN** - Iron Ore



**SBP** - Sandblast  
Copper



**SWD** - Sandalwood

# COMPASS DECO

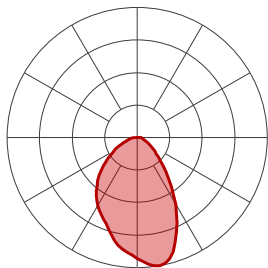
RECESSED WALL



## Photometrics

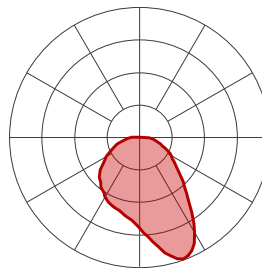
Values calculated based on 3500K.

ROUND



W	LM	LM/W
2 W	62	31
3 W	82	27

SQUARE



W	LM	LM/W
2 W	69	34.5
3 W	92	31

## MULTIPLIER

Please follow the multiplier table to ensure correct lumen value. CCT will change the lumen value.

CCT	
1800K	0.84
2200K	0.93
2700K	0.98
3000K	1
3500K	1
4000K	1.03
5000K	1.03

## Technical Specifications

### LIGHT SOURCE

Custom array of mid-flux LEDs available in 1800K, 2200K, 2700K, 3000K, 3500K, 4000K, and 5000K with 90+ CRI with elevated R9 value. Color consistency is maintained to within 2 SDCM. All LEDs have been tested in accordance with IESNA LM-80-08 and the results have shown L80 lumen maintenance greater than 60,000 hours. Absolute product photometry is measured and presented in accordance with IESNA LM-79, unless otherwise indicated.

### ELECTRICAL

Unless otherwise specified, dimming down to 1%. At maximum driver load: efficiency > 84%, PF > 0.9, THD < 20%.

**Integral:** No dimming

**Remote:** 0-10V, DALI

### PoE

Depending on the PoE manufacturer selected, Lumenwerx will install the node in factory as either integral to the luminaire, or as a remote module. Factory programming of the PoE node may or may not enable the following functionalities: lumen package, DUO (tunable white), QUADRO (RGBW), emergency battery backup, and sensor integration. These must be addressed and evaluated on a case-by-case basis.

### FINISH

Standard powder-coat paint available in matte white and black. Custom colors are also available. Optional antimicrobial finish.

### CONSTRUCTION

**Housing:** Die-cast aluminum

**Faceplate:** Die-cast aluminum

**Lens:** Acrylic

**Mounting frame:** Galvanized sheet metal

**Back box:** Galvanized sheet metal

**Remodel:** Galvanized sheet metal

### WEIGHT

**Back box:** 1.07 lbs - 0.49 kg

**Mounting frame:** 2.48 lbs - 1.12 kg

**Remodel:** 0.50 lbs - 0.23 kg

### CERTIFICATIONS

**ETL:** Rated for indoor dry/damp locations. Conforms to UL Standard 1598 and certified to CAN/CSA Standard C22.2 No. 250.0.

**IC rated:** Suitable for direct contact with insulation when specified with NCH installation type option.

### WARRANTY

Lumenwerx provides a five-year limited warranty on electrical and mechanical performance of the luminaires, including the LED boards, drivers, and auxiliary electronics. Lumenwerx will repair or replace defective luminaires or components at our discretion, provided they have been installed and operated in accordance with our specifications. Other limitations apply, please refer to the full warranty on our website.